

1920 HOUSE

DATE: September 2006

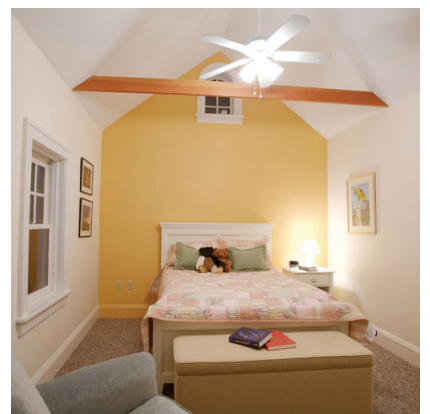
LOCATION: Princeton, New Jersey

SIZE: 4,000 SF

PROJECT DESCRIPTION: Addition and Renovation

JZA+D took this 1920s house through a significant renovation and expansion, nearly doubling the living space. At the same time, the firm maintained the context and scale within the neighborhood. JZA+D created more livable space by pushing out the back of the house and attaching the main structure to the garage. The original garage was converted into a guest bedroom suite, with the kitchen and dining room enlarged. The addition also added a new playroom, library and a powder room. The house gained a new second-floor master bedroom suite, laundry room with renovations to existing bathrooms and bedrooms. A conversion of the attic produced a third-floor bed and bath - complete with Juliette Balcony.

Another critical aspect of the renovation was the inclusion of sustainable and energy efficiency measures. The oil furnace was replaced with a new high efficiency multi-zone gas system. High R values were achieved through the use of blown in insulation and complete window replacement. Renewable, sustainable and recycled materials include bamboo flooring, glass tiles and "Green" label carpets.



JZA+D