

## PRISTINE FINE DRY CLEANING

**DATE:** October 2010

**LOCATION:** Princeton, New Jersey

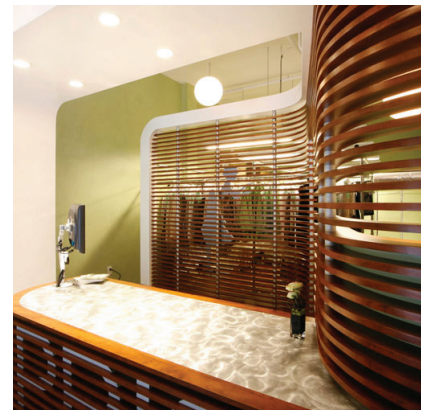
**SIZE:** 765 SF

**PROJECT DESCRIPTION:** Architecture and Interior Design

JZA+D provided comprehensive architecture and interior design services, for this new retail space which is part of a larger mixed-use development project. The new retail space contains a dry cleaning drop off, custom tailoring and concierge service for the building it occupies and surrounding community.

The modern design supports specific functionality needs, client interaction, and signage complemented by a hint of industrial aesthetic. To complement the “Green” nature of the cleaning process the client uses, JZA+D brought sustainable design to the project including items such as energy efficient lighting, no VOC paint, no VOC concrete stain, and recycled tile.

Our design solution anchored the multifunctional aspect of the space with two curvilinear elements. The custom designed reception kiosk with complementary reception area offers a place for client drops and pick up of their garments, as well as, a point of sale area for concierge services. The reception area was also designed as a transition point leading clients in need of tailoring services to a circular fitting space toward the back of the space offering privacy from the remaining retail area.



JZA+D